

# 2023 GYM & SPORTS SUPPLIES CATALOGUE







## LO-B10 SINGLE MAST BASKETBALL FRAME

- Most widely used backstop on the market, clean simple design is esthetically pleasing
  - Ceiling Suspended frames are used where wall mounted frame are not feasible if extensions are too great or mounting over bleachers
- Available as a fixed (stationary) frame or folding frames used when fixed backboard would interfere with other game lines.

### Features included on each frame:

- Constructed from 152mm [6"] Outside Diameter HSS tubing
- “U” Channel top incorporates adjustable folding drops for perfect leveling on site
- 50mm [2"] Mitered square side brace fitted and welded for added strength and great looks
- Fully welded construction on ceiling height up to 9.7m [32'], bolted design for higher ceilings
- Laser cut saddle clamps with “U” bolt hardware
- 6mm[1/4"] Galvanized steel Aircraft cable in 7x19 strand core 7000lbs breaking strength
- Small Backboard brackets 35" c.t.c for fan-shaped backboard and height adjusters
- Large backboard brackets with direct goal attachment for rectangular glass backboards
- LO-B79 Locking Device must be used on all vertically folding basketball frames





Fully Welded Frame

**LO-B10-22** for ceiling up to 6.7m(22') beam height

**LO-B10-26** for ceiling up to 7.9m(26') beam height

**LO-B10-28** for ceiling up to 8.5m(28') beam height

**LO-B10-30** for ceiling up to 9.1m(30') beam height

**LO-B10-32** for ceiling up to 9.7m(32') beam height

Bolted frame designs for higher ceilings

Priced per job for ceiling higher than 9.7m(32')

## Front Folding-Front braced

Folding front Knee brace; allows for tighter installations against wall, stage front or divider

## Rear Folding-Rear braced

Folding Rear Knee brace, unit folds backwards not interfering with other game lines when closed

## Side Folding-left or right

Folding Side Knee brace; unit folds sideways not interfering

with other game lines when closed

## Front Folding-Rear braced

Telescopic Back Brace

Counter balance design allows units weight to lock in playing position



Side Folding-Left braced

[www.turfnetssportssupplies.com](http://www.turfnetssportssupplies.com)



## LO-B8 V-Style Basketball Frame



Ceiling Suspended Double Drop V-Style folding Basketball Frame used for main or side courts in front of stages where wall mounted frames can not be installed. Features a ridged welded frame manufactured from 50mm(2") square steel tubing. 6mm (1/4") Galvanized Aircraft lifting cable. Available in 1600mm (63") c.t.c frame allows for clear view thru glass backboard without obstructions from structure or 890mm (35") c.t.c for fan-shaped backboards or height adjusters. Backboard sits between drops allows minimum forward movement when folded -LO-B79 Safety Strap must be used on all vertically folding basketball frames

**LO-B8-22** up to 6.7m(22') beam height  
**LO-B8-26** up to 7.9m(26') beam height  
**LO-B8-28** up to 8.5m(28') beam height  
**LO-B8-32** up to 9.7m(32') beam height

**LO-B8R-22** up to 6.7m(22') beam height 63" c.t.c  
**LO-B8R-26** up to 7.9m(26') beam height 63" c.t.c  
**LO-B8R-28** up to 8.5m(28') beam height 63" c.t.c  
**LO-B8R-32** up to 9.7m(32') beam height 63" c.t.c

Special Designed frames for higher ceilings.

## LO-B9 Ceiling Suspended Straight Drop Basketball Frame



Same uses and descriptions as the LO-B8 (above) - closer mounting to obstacles. (ie. Stage front, walls) Due to backboard mounts on straight drop main mast

-LO-B79 Safety Strap must be used on all vertically folding basketball frames

890mm(35")c.t.c for fan-shaped backboards or LO-B5 Adjuster

**LO-B9-22** up to 6.7m(22') beam height  
**LO-B9-26** up to 7.9m(26') beam height  
**LO-B9-28** up to 8.5m(28') beam height  
**LO-B9-32** up to 9.7m(32') beam height  
 1600mm (63")c.t.c for clear view thru Rect. Glass Backboard

**LO-B9R-22** up to 6.7m(22') beam height  
**LO-B9R-26** up to 7.9m(26') beam height  
**LO-B9R-28** up to 8.5m(28') beam height  
**LO-B9R-32** up to 9.7m(32') beam height

Special Designed frames for higher ceilings



## LO-B5 Manual Height Adjuster Basketball Frame

**USES:** - for use on 890mm(35") c.t.c frames where backboard and rim height require adjustment  
- allows standard 10' [3048mm] rim heights to adjust down to 8' [2438mm] or anywhere in-between

**FEATURES:** - 19mm(3/4") diameter acme center rod with precision thrust bearings and brass flange nut  
- powder coated metal framework ensuring a strong, tough finish  
- nylon runner guides for smooth operation and no metal to metal contact.  
- includes 1 removable awning style crank handle  
- mounts onto frames, and accepts 890mm(35") x 508mm(20") backboard bolt patterns



LO-B5 Raised



LO-B5H Handle



LO-B5 Lowered

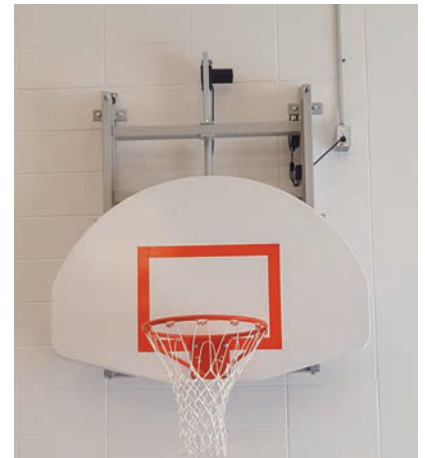
## LO-B5E Electric Height Adjuster

**USES:** - for use on 890mm(35") c.t.c wide frames where backboard and rim height required adjustment  
- allows standard 3048mm(10') rim heights to adjust down to 2438mm(8') or anywhere in-between

**FEATURES:** - heavy duty linear motion with electric motor - powder coated metal framework  
- nylon runner guides for smooth operation - mounts onto frames, and accepts backboards with 890mm (35") x 508mm (20") bolt patterns

*Control options:*

- Wireless remote controller
- hardwired key operated control



LO-B5E Electric Height Adjuster

## LO-B5EW Electric Height Adjuster with Wand adapter LO-B77Wand -Electric Wand Controller

- Electric Wand control-bring power to unit with plug-in electric wand



LO-B77 Wand Controller



## LO-B7 Wall Mounted Side Swinging Basketball frame

Designed for use where fixed basketball backboards would interfere with other game lines. Allows backboard to be manually folded to wall. Mitered joints with fully welded frame, telescopic backboard tubes allow wall extension adjustment, Backboard and frame manually swing sideways by means of 2 pull handles, one pulls locking pin, the other pulls the frame into folded position. Economical due to lack of vertical movement eliminates the need for a winch, cable, safety straps. Available in  
-1600mm(63") c.t.c. for Rect. Glass Backboards Or -890mm(35")c.t.c for fan-shaped backboards and height adjusters.



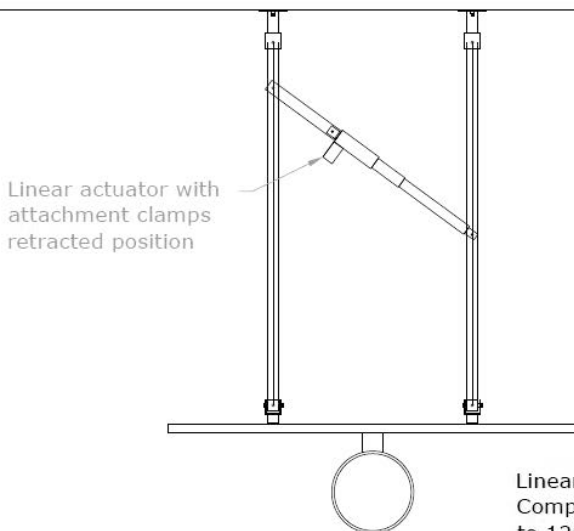
### 1600mm(63") c.t.c. for Rectangular Glass Backboards without height adjuster

<b>LO-B7R #1</b>	20mm [4']	to 625mm [5'4"]
<b>LO-B7R #2</b>	1650mm [5'5"]	to 2031mm [6'-8"]
<b>LO-B7R #3</b>	2057mm[6'-9"]	to 2437mm [8']
<b>LO-B7R #4</b>	2463mm [8'-1"]	to 2844mm [9'-4"]
<b>LO-B7R #5</b>	2870mm[9'-5"]	to 3250mm [10'-8"]

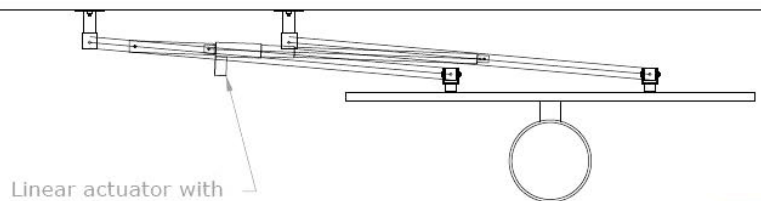


### 890mm(35")c.t.c for fan-shaped backboards or Glass Backboards with height adjusters

<b>LO-B7 #1</b>	20mm [4']	to 625mm [5'4"]
<b>LO-B7 #2</b>	1650mm [5'5"]	to 2031mm [6'-8"]
<b>LO-B7 #3</b>	2057mm[6'-9"]	to 2437mm [8']
<b>LO-B7 #4</b>	2463mm [8'-1"]	to 2844mm [9'-4"]
<b>LO-B7 #5</b>	2870mm[9'-5"]	to 3250mm [10'-8"]



Linear actuator with attachment clamps retracted position



Linear actuator with attachment clamps extended position



Control options:  
-Wall Mounted Key Switch  
-Handheld FOB with receiver

Linear actuator with 18" extension range and 1000lbs of force. Complete with 12V DC motor and power adapter to allow connection to 120V supply.

### LO-B7E Electric Side Folding

Power Linear Actuator in place of telescopic locking bar. Allows Side Swing frames to be folded with the touch of a button or turn of a key switch. Can be added to existing frames. Hardwired power source required at actuator location.



## LO-B6 Wall Mounted Side Up Basketball Frame

Designed for use where fixed basketball backboards would interfere with other game lines.

Allows backboard to be vertically folded to wall.

-Available in -1600mm( 63") c.t.c. for Rect. Glass Backboards or -890mm(35")c.t.c for fan-shaped backboards and height adjusters. Mitered joints with fully welded frame -telescopic backboard tubes allow wall extension adjustment. Backboard and frame swing vertically by means of electric or manual winch with 1/4" Aircraft Lifting Cable and solid machined pulleys.

Specially manufactured frames for larger extension or avoiding wall obstacles.-

**LO-B79 Safety Strap** must be used on all vertically folding basketball frames. (requires wall plate)



**890mm(35")c.t.c for fan-shaped backboards or Glass Backboards with height adjusters**

**LO-B6 #1** 20mm [4'] to 625mm [5'4"]

**LO-B6 #2** 1650mm [5'5"] to 2031mm [6'-8"]

**LO-B6 #3** 2057mm[6'-9"] to 2437mm [8']

**LO-B6 #4** 2463mm [8'-1"] to 2844mm [9'-4"]

**LO-B6 #5** 2870mm[9'-5"] to 3250mm [10'-8"]



**1600mm(63") c.t.c. for Rectangular Glass Backboards without height adjuster**

**LO-B6R #1** 20mm [4'] to 625mm [5'4"]

**LO-B6R #2** 1650mm [5'5"] to 2031mm [6'-8"]

**LO-B6R #3** 2057mm[6'-9"] to 2437mm [8']

**LO-B6R #4** 2463mm [8'-1"] to 2844mm [9'-4"]

**LO-B6R #5** 2870mm[9'-5"] to 3250mm [10'-8"]

Wall mounted electric winch can be adapted to accept

### LO-B77-Wand Power Supplying Wand

Save on electrical hardwiring costs! This wand plugs into a standard 15amp receptacle in your gym and brings power to each wall mounted motor. Female 4 prong connector attached to a slightly modified winch wired with a 4 prong male plug. Wand will bring power to each winch independently allowing operator to control up and down from key switch.

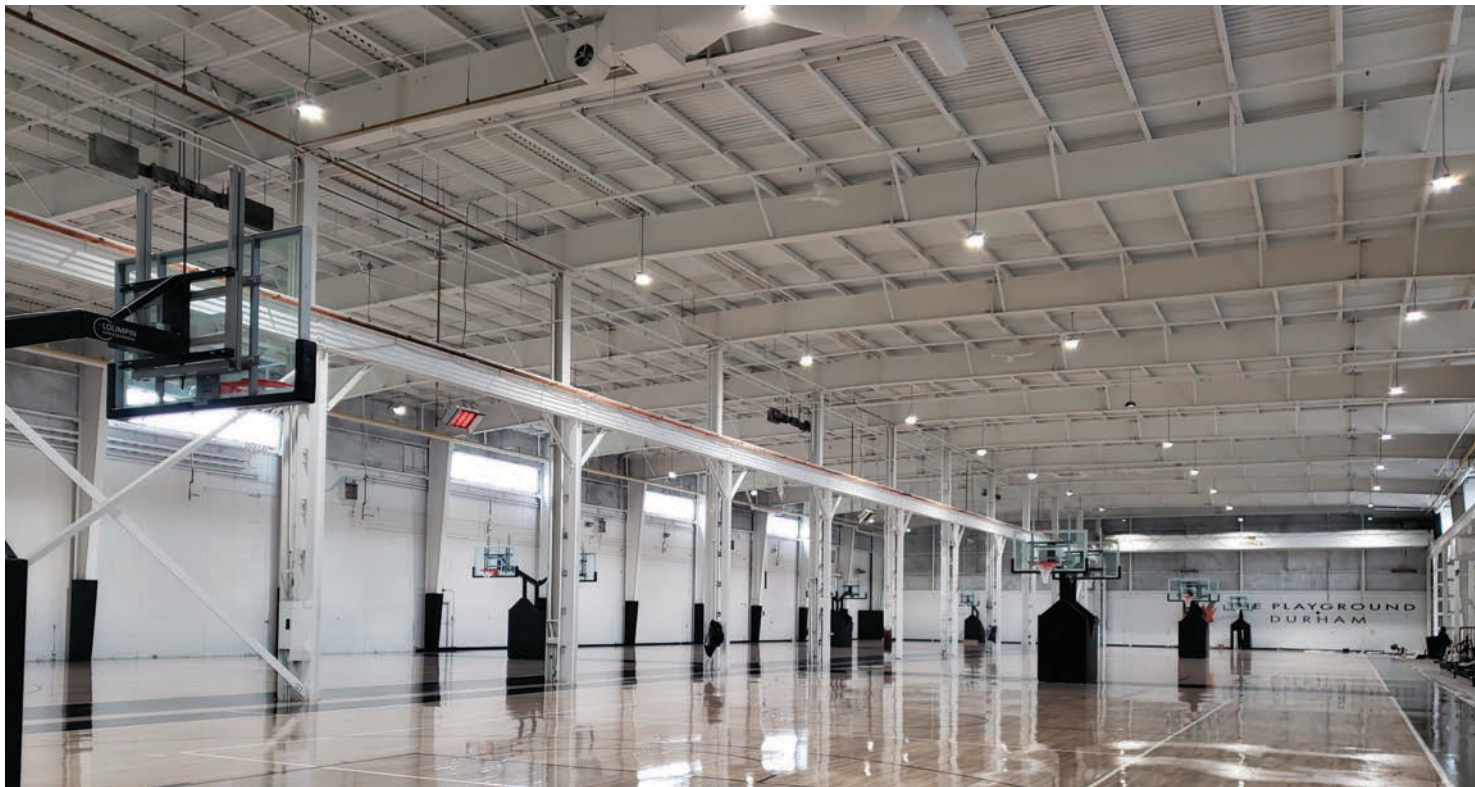
See winch Accessories page for details



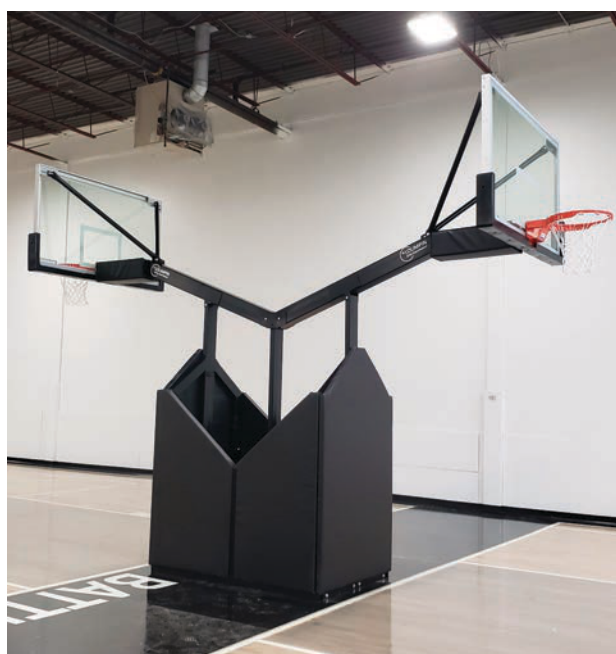
**LO-B77 Winch**-wall mounted modified to accept

**LO-B77Wand**-Power supply





**LO-B21-H Single Backboard  
with Height Adjustable Rim  
Height**



**LO-B22 Double Backboard Fixed Rim Height  
LO-B22-H Double Backboard With Height  
Adjustable Rim Height**



**LO-B21 Single Backboard Fixed  
Rim Height**

## Floor Mounted Fixed Basketball Frame

This design allows Unit base to be permanently secured to concrete floor with anchor bolts. Designed for heavy duty play. 1.52m (5') boom extension allows maximum playability under backboard. Fully padded framework up to 1.83m (6') Direct Goal to Frame Attachment eliminates stress on backboard from dunking. Spring Loaded Official Breakaway Rim. CNC bent backboard top bracing. Available in fixed Rim height, or Adjustable Rim Height from 3048mm(10') to 2438mm(8') or anywhere in-between. Choose your Padding and Backboard Cushion Edge Colours, Custom LOGO Printing Available on Padding.

Optional Items: - Electric controlled Height Adjuster

-Shot Clock Brackets

Turf Net Sports Supplies 1-877-617-8787 | 905-892-8787



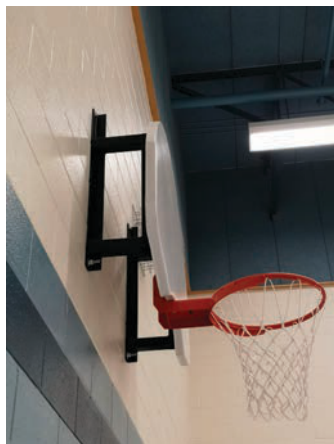
# LO-B3 Wall Mounted Fixed Basketball Frame

Installed where fixed basketball backboards would not interfere with other game lines.

Economical due to lack of movement

**FEATURES:-** welded frames-no adjustment required on-site, manufactured from 50mm(2") square steel tube, available in two finishes-painted for indoor use or hot dipped zinc galvanized for outdoor use. Frames with extensions over 914mm (36") require additional safety cable  
-Wall mounting hardware included

**Frames only! Select Backboard and Rims separately**



**LO-B3 Series accepts 890mm(35") x 508mm(20") fan -shape backboards & Height Adjusters.**

**Indoor-Painted finish**

LO-B3-6 extends backboard 152mm(6")

LO-B3-12 extends backboard 305mm(12")

LO-B3-24 extends backboard 610mm(24")

LO-B3-F1 adjustable from 914mm(36") to 1.2m(48")

LO-B3-F2 adjustable from 1.24m(4'1") to 1.5m(5')

LO-B3-F3 adjustable from 1.55m(5'1") to 1.8m(6')

LO-B3-F4 adjustable from 1.85m(6'1") to 2.1m(7')

LO-B3-F5 adjustable from 2.15m(7'1") to 2.4m(8')

Larger extension are considered custom made.

**LO-B3R Series accepts 1066mm (42") x 1829mm (72") Glass Backboards (No Height Adjuster)**

LO-B3R-6 extends backboard 152mm(6")

LO-B3R-12 extends backboard 305mm(12")

LO-B3R-24 extends backboard 610mm(24")

LO-B3R-F1 adjustable 914mm(36") to 1.2m(48")

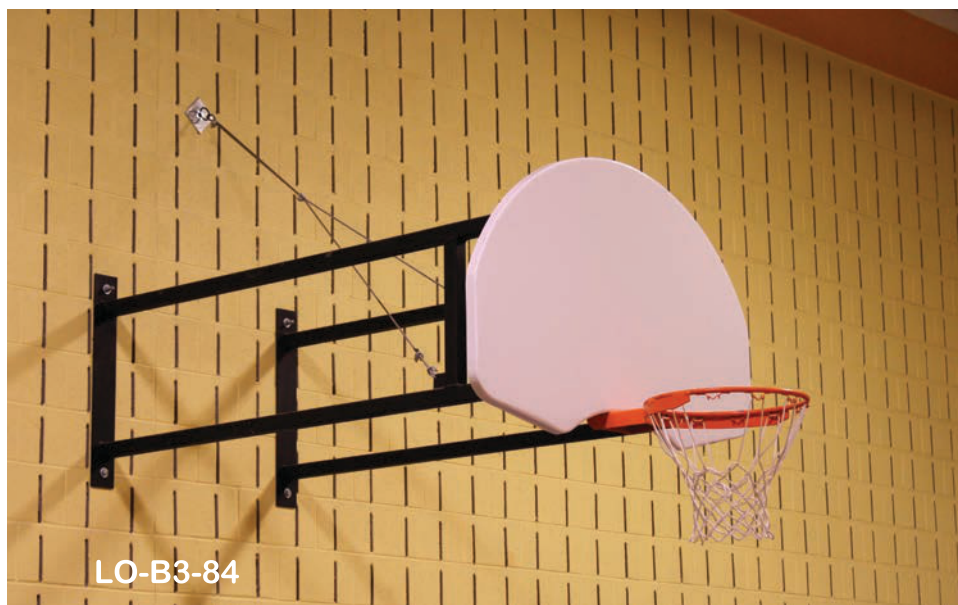
LO-B3R-F2 adjustable 1.24m(4'1") to 1.5m(5')

LO-B3R-F3 adjustable 1.55m(5'1") to 1.8m(6')

LO-B3R-F4 adjustable 1.85m(6'1") to 2.1m(7')

LO-B3R-F5 adjustable 2.15m(7'1") to 2.4m(8')

Larger extension are considered custom made





### LO-B78 Manual Winch

Industry engineered specifically for use as a basketball backstop winch, the LO-B78 is the only oil free design available. Frame Constructed from Precision interlocking laser cut steel for high rigidity and precise alignment. Semi enclosed for safety. Powder coated for corrosion resistance. Supplied with bottom mounted eye for attaching the removable awning style crank handle. (included) *Weight: 31 lbs Shipping Dimension: 432mm (17") x 305mm (12") x 355mm (14")*



### LO-B78H Crank handle

Awning style crank handle with top hook. Ideal for cranking manual wall

mounted basketball winches 1829mm (72") in length Designed to reach winches installed at 3m (10') high. Powder coated finish



### LO-B79 Posilok Safety Strap

Recommended on all vertically folding basketball backstops. Able to clamp onto 89mm (3-1/2") diameter or 102mm (4") diameter steel tubing. Frame Constructed from Precision interlocking laser cut steel for high rigidity and precise alignment. Powder Coated black finish. The Posilok shall incorporate a 50mm (2") wide belt rated at 7,300 lbs., maximum breaking strength. The entire unit must be capable of withstanding a test using a 1750 lb falling weight, without strap failure or structural damage. *Weight: 22 lbs*

*Shipping Dimension: 304mm (12") x 254mm (10") x 178mm (7")*



### LO-B77-Wand Power Supplying Wand

Save on electrical hardwiring costs! This wand plugs into a standard 15amp receptacle in your gym and brings power to each wall mounted motor. Female 4 prong connector attached to a slightly modified winch wired with a 4 prong male plug. Wand will bring power to each winch independently allowing operator to control up and down from key switch.

Wand can also be used on a modified LO-B5E Electric Height Adjuster.

Supplied with 7.62m (25') of wiring.



## LO-B77 Electric Tork Winch

Industry engineered specifically for use as a basketball backstop winch, the TW2000 is the only oil free design available in the industry. Frame Constructed from Precision interlocking laser cut steel for high rigidity and precise alignment. Semi enclosed for safety. Powder coated for corrosion resistance. Supplied standard with 120Volt 1 HP motor. Weight: 64 lbs

Shipping Dimension: 508mm (20") x 580mm (20") x 432mm (17")

**LO-B77-208 Electric Tork Winch** Designed for 220/208Volt input



## LO-B77-Cage Tork Winch Cage

Protection to motor and capacitors in wall mounted applications. Designed to clip onto winch housing and secured using the same cover attachment hardware supplied with the winch. No drilling or extra wall anchoring required.



## LO-QR4 LynRus Electric Winch

Electric Motor Winch for raising and lowering Basketball Frames. The QR4 Electric Backstop Winch is designed with High-strength Metal Gears. Winch is specified to continuously run at the maximum rated load of 1250 lbs./ 566 kilograms for the motors rated duty cycle of 20 minutes without sustaining any gear damage. Large grooved cable drum ensures proper coiling increasing cable life. Mounts onto 89mm (3-1/2") diameter steel tubing. Supplied standard with 120Volt 3/4HP motor.

Weight: 75 lbs

Shipping Dimension: 711mm (28") x 432mm (17") x 330 m(13")



## LO-B77K-Key Switch

Flush Wall Mounted Switch designed to operate Basketball or Curtain winches. 3 Position spring loaded switch supplied with two keys. Available in 1-8 gang plates.



## Wireless Controller

120V Wireless Transmitter & Receiver. 23m [75ft] Range Operates 25 channels powered by 9V DC battery. Receiver complete with 4 prong connection allows winch to plug into unit. One receiver per motor, one transmitter per gym.

### LO-B77T

Transmitter

### LO-B77R

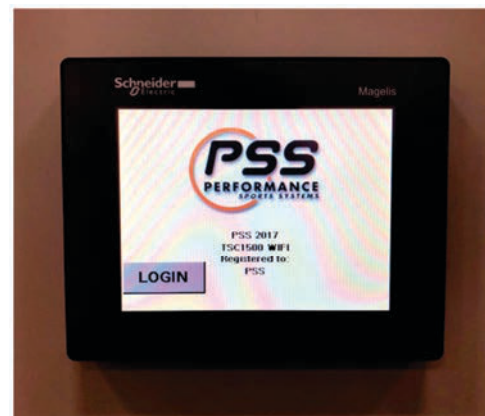
Receiver



## LO-B77GC

### Touch Pad Group Controller

Control all your facilities equipment with this easy to use Touch screen. Ability to operate multiple units at once, allows connection to Basketball courts, electric height adjusters, curtain dividers or other 120V operated devices. Call for more details



**LO-B72 Rectangular Glass Backboard**

1829mm(72") Wide x 1069mm(42") high 13mm(1/2") Thick Tempered Glass  
 60mm(2-3/8") wide aluminum channel. Precision cut & bent heavy duty corner mounting brackets holding an extruded Aluminum Frame. Opaque White target and border fired onto glass 1600mm (63") x 915mm (36") c.t.c mounting dimensions. Accepts front mounted rims. Shown with black cushion edge (not included)

**Must use LO-B73M Padding or pads with minimum internal width of 60mm(2-3/8")**

Recommended Rims– LO-B65 Breakaway Rim

Weight: 200 lbs Shipping Dimensions: 1829mm (72") x 1143mm (45") x 76mm (3")

**LO-B72C Conversion Rectangular Glass Backboard**

1829mm(72") Wide x 1069mm(42") high 13mm(1/2") Thick Tempered Glass. 70mm(2-3/4") wide aluminum channel. Precision cut & bent heavy duty corner mounting brackets holding an extruded Aluminum Frame. Opaque White target and border fired onto glass. 1600mm(63") x 915mm(36") c.t.c mounting dimensions.

**Accepts front mounted rims. Shown with black cushion edge (not included) Must use LO-B73M**  
 Padding or pads with minimum internal width of 70mm(2-3/4")

Recommended Rims– LO-B65 Breakaway

Weight: 220Lbs Shipping Dimension: 1829mm (72") x 1143mm (45") x 152mm (6")







### LO-B73M Molded Rectangular Glass Cushion Edge Padding kit

Cushion Edge Padding for bottom edge of 1829mm[72"] wide Rectangular Glass Backboards. Constructed from durable Urethane foam with internal support for securing onto backboard. Internal width of 70mm(2-3/4") Hardware included

**One kit covers one backboard. Order two kits per court.**

Weight: 13 lbs

Shipping Dimension: 990mm (39") x 457mm (18") x 127mm (5")



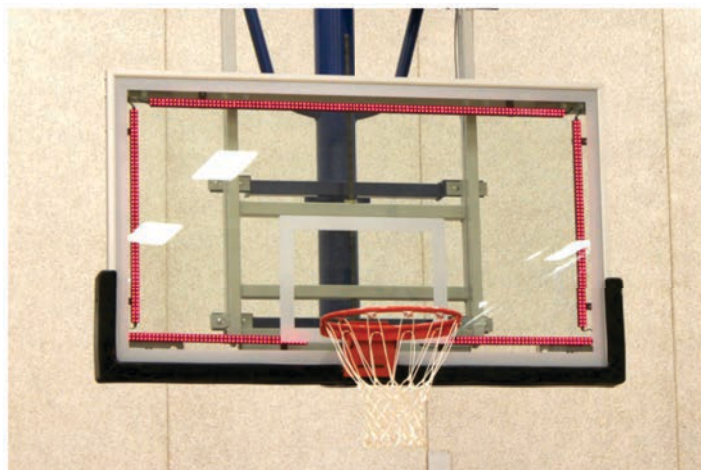
### LO-L129 Anti-Whip Basketball Netting

High Quality replacement netting. 160g Anti-whip nylon with a shaped hourglass design. Fits all no-tie and tube tie rims with a 12 point attachment.



### LO-BG150 Chain mesh

483mm (19") Rust resistant zinc plated chain mesh for outdoor use. Complete with "S" hooks for attachment. Fits all no-tie and tube tie rims with a 12 point attachment.



### LO-LEDPL LED Perimeter Lighting

Installed onto back side of glass backboards, activated by shot clock or scoreboard. Signal sent to lights when possession clock reaches '0' and at the end of each quarter. Red LED lights.



### LO-B76A Fan Shaped Aluminum Backboard

Fan-shaped aluminum backboard is made from one piece permanent mold casting. 890mm[35"] horizontal x 508mm[20"] vertical bolt patterns, 76mm[3"] O.C. and 9mm[3/8"] threaded inserts casted into place.

Recommended rims are LO-B62, LO-B63, LO-B65, LO-B69W

Weight: 54Lbs

Shipping Dimension: 927mm(36.5")x1372mm(54")50mm(2")

### LO-B76AB Fan Shaped Aluminum with Target

Fan-shaped aluminum backboard is made from one piece permanent mold casting. 890mm[35"] horizontal x 508mm[20"] vertical bolt patterns, 76mm[3"] O.C. and 9mm (3/8") threaded inserts casted into place.

Recommended rims are LO-B62, LO-B63, LO-65, LO-B69W.

Orange Target applied. Weight: 54Lbs

Shipping Dimension: 927mm(36.5") x 1372mm(54") x 50mm(2")



### LO-B76S Fan Shaped Steel Backboard

Constructed from a single sheet of 12 gauge formed steel, rear welded channels allow for 890mm[35"] horizontal x 508mm[20"] vertical bolt patterns with key slots. Powder coated white finish.

Recommended Rims- LO-B60, LO-B61, LO-B67, LO-B69B

Weight: 51Lbs

Shipping Dimension: 965mm(38") x 1397mm(55") x 50mm(2")

### LO-B76 Fan Shaped Wood Backboard

Backboard shall be formed from a single piece of 38mm [1-1/2"]

PureBond Classic Core plywood with a melamine white finish back and

front. Backboards and mounting holes are CNC cut for precise measurements. Steel threaded inserts are pre-set @ 20" vertical and 35" horizontal centers to match the standard fan mounting dimensions. Goal mounting holes are pre-drilled for a rear mounting rim.

Weight: 45Lbs

Shipping Dimension: 965mm(38") x 1397mm(55") x 50mm(2")

### LO-B76SB Fan Shaped Steel Backboard with Target

Same specs as LO-B76S with Orange Target applied for target.

### LO-B76B Fan Shaped Wood Backboard with Target

Same specs as LO-B76 with Orange Target applied for target.







### LO-B75S Rectangular Steel Backboard

Rectangular Steel Backboard 1067mm(42") x 1829mm(72")  
Constructed from a single sheet of 12 gauge formed steel, rear welded channels allow for 890mm[35"] horizontal x 508mm[20"] vertical bolt patterns with key slots. Powder coated white finish. Recommended Rims– LO-B62, LO-B63, LO-B65

**Shown with Red cushion edge padding (not included)**

Weight: 140 lbs

Shipping Dimension: 1829mm (72") x 1067mm (42") x 76mm (3")

### LO-B75SB Rect. Steel Backboard with target

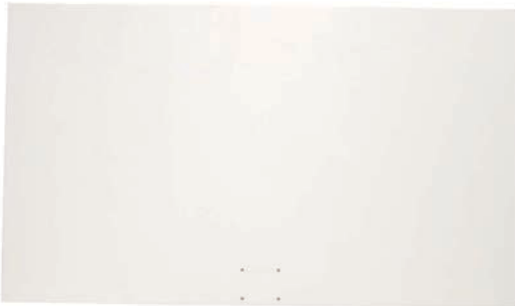
Rectangular Steel Backboard 1067mm(42") x 1829mm(72")  
Constructed from a single sheet of 12 gauge formed steel, rear welded channels allow for 890mm[35"] horizontal x 508mm[20"] vertical bolt patterns with key slots. Powder coated white finish. Recommended Rims– LO-B62, LO-B63, LO-B65

**Shown with Red cushion edge padding (not included)**

Orange Target applied

Weight: 140 lbs

Shipping Dimension: 1829mm (72") x 1067mm (42") x 76mm (3")



### LO-B75W Rectangular Wood Backboard

Rectangular Wood Backboard 1067mm(42") x 1829mm(72")  
Constructed from 38mm(1-1/2") plywood with a white melamine finish on both sides. Threaded inserts allow for 890mm(35") horizontal x 508mm(20") vertical bolt patterns or 1600mm[63"] horizontal x 914mm[36"] vertical bolt patterns, which are industry standards.

Recommended Rims– LO-B62, LO-B63, LO-B65

Weight: 140 lbs

Shipping Dimension: 1829mm (72") x 1067mm (42") x 76mm (3")

### LO-B75WB Rect. Wood Backboard with target

Rectangular Wood Backboard 1067mm(42") x 1829mm (72")  
Constructed from 38mm(1-1/2") plywood with a white melamine finish on both sides. Threaded inserts allow for 890mm(35") horizontal x 508mm(20") vertical bolt patterns or 1600mm[63"] horizontal x 914mm[36"] vertical bolt patterns, which are industry standards.

Orange Target Applied

Recommended Rims– LO-B62, LO-B63, LO-B65

Weight: 140 lbs

Shipping Dimension: 1829mm (72") x 1067mm (42") x 76mm





## LO-B60 Standard Rear Mounted Rim

Precision cut and bent heavy duty mounting brackets  
457mm (18") I.D. 16mm(5/8") Solid Steel Rim, full flat steel  
brace. No-tie tube netting bar simplifies net attachment to  
rim. Polyester Powder coated orange finish Mounting  
Hardware and nylon anti-whip netting included  
Recommended Backboards-LO-B76S, LO-B76SB

*Weight: 19 lbs*

*Shipping Dimension: 635mm (25") x 508mm (20") x 178mm (7")*



## LO-B61 Rear Mounted Double Rim

Precision cut and bent heavy duty mounting brackets  
Two 457mm (18") I.D. 5/8" Solid Steel Rim stacked and welded  
together for superior strength, full flat steel brace  
No-tie tube netting bar simplifies net attachment to rim  
Polyester Powder coated orange finish  
Mounting Hardware and nylon anti-whip netting included  
Recommended Backboards-LO-B76S, LO-B76SB

*Weight: 21 lbs*

*Shipping Dimension: 635mm (25") x 508mm (20") x 178mm (7")*



## LO-B67 Rear Mounted Breakaway Rim

Precision cut and bent heavy duty mounting brackets  
18" I.D. 5/8" Solid Steel Rim, full flat steel brace. Steel  
springs allow rim to breakaway/collapse while players  
hang or dunk, in which the rim will return to playing  
position. No-tie tube netting bar simplifies net  
attachment to rim. Polyester Powder coated orange  
finish, Mounting Hardware and nylon anti-whip netting  
included.

Recommended Backboards-LO-B76S, LO-B76SB

*Weight: 28 lbs*

*Shipping Dimension: 749mm (29-1/2") x 254mm (10") x  
521mm (20-1/2")*



## LO-B62 Standard Front Mounted Rim

Precision cut and bent heavy duty mounting brackets  
457mm (18") I.D. 5/8" Solid Steel Rim, solid steel round bar  
braces. No-tie net hooks attached netting to rim

Polyester Powder coated orange finish

Mounting Hardware and nylon anti-whip netting included

Recommended Backboards-LO-B76A, LO-B76AB and all  
rectangular backboards.

*Weight: 15 lbs*

*Shipping Dimension: 635mm (25") x 508mm (20") x 178mm (7")*



## LO-B63 Front Mounted Double Rim

Precision cut and bent heavy duty mounting brackets

Two 457mm (18") I.D. 5/8" Solid Steel Rim stacked and welded,  
solid steel round bar braces. No-tie net hooks attached netting  
to rim. Polyester Powder coated orange finish

Mounting Hardware and nylon anti-whip netting included

Recommended Backboards-LO-B76A, LO-B76AB and all  
rectangular backboards.

*Weight: 20 lbs*

*Shipping Dimension: 635mm (25") x 508mm (20") x 178mm (7")*



## LO-B65 Front Mounted Breakaway Rim

Precision cut and bent heavy duty mounting brackets  
18" I.D. 5/8" Solid Steel Rim, full flat steel brace. Steel  
springs allow rim to breakaway/collapse while players  
hang or dunk, in which the rim will return to playing  
position. No-tie tube netting bar simplifies net  
attachment to rim. Polyester Powder coated orange  
finish, Mounting Hardware and nylon anti-whip netting  
included.

Recommended Backboards-All rectangular wood,  
glass and steel backboards, LO-B76A, LO-B76AB

*Weight: 25 lbs*

*Shipping Dimension: 635mm (25") x 508mm (20") x 178mm  
(7")*



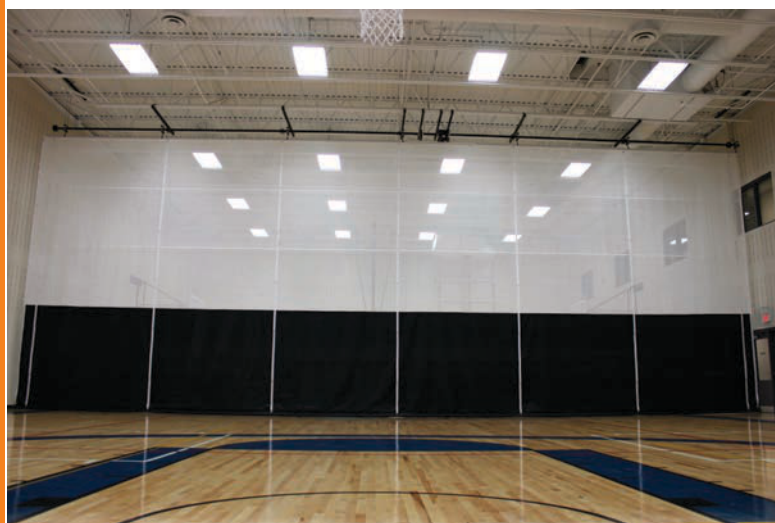
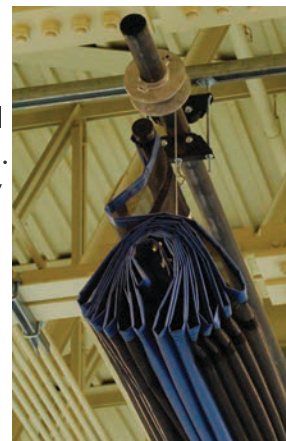
## LO-FDC Ceiling Mounted Folding Divider Curtain

Divide your gym into 2 spaces by installing a ceiling mounted folding divider curtain. Strong and trustworthy, this curtain utilizes special ceiling clamps to hold all metal parts including the winch, allowing curtain to be coiled up towards the ceiling. Designed to be mounted below a beam, or straddling two beams with specifically designed crossers. Available in:

-Full 18oz. Solid Vinyl Curtain  
-Full Flexmesh

-Vinyl/Flexmesh Combination  
-Sports Nets

Our newest available option is invisible cables lines for the lower 2743mm (9') to prevent the facility users from dangerously getting caught up in exposed cable lift lines.



## LO-RBC21 Retractable Batting Cage

Retractable Batting Cage mounted to ceiling beams. • Unique design allows cage to be lowered with the turn of a key switch. -Features 2 HP electric motor, operation via standard key switch or wireless remote. -Knotted, Fire Retardant, Black, Nylon Golf Netting. 7/8" (22mm) Square  
-Continuous drive shaft for even cage balance and load distribution  
-Simply lower netting to flip netting on top of framework and raise to store tight to the ceiling beams.

Typical sizes:

30'L x 11'H x 11'W.

Custom Sizes available

Picture: 70'L x 15' H X 11' W

